



A two-story semi-detached house with a brick and tan exterior. The house has a dark tiled roof and a chimney. The front facade features several windows with white frames and a white front door. A paved driveway leads to a dark wooden gate. The front garden has a green lawn, a large bare bush, and a stone wall with a metal gate. A utility pole is visible on the right side of the image.

GENERAL INFORMATION

Offered to the market with no upward chain, Dawsons are delighted to present this well-proportioned three-bedroom semi-detached family home, complete with driveway and garage, situated within a quiet and desirable cul-de-sac on Springfield Avenue, Upper Killay.

Perfectly positioned for families and outdoor lovers alike, the property offers easy access to the stunning beaches of Gower Peninsula, the well-regarded Cila Primary School, and the popular Killay shopping precinct, all just a short drive away.

The accommodation is arranged over two floors. The ground floor briefly comprises an entrance hallway, a bright front-facing lounge opening through to a rear dining room, and a fitted kitchen. Upstairs, there are three bedrooms – two doubles and one single – together with a family bathroom.

Additional benefits include gas central heating, uPVC double glazing, driveway parking, a garage, and an enclosed rear garden mainly laid to lawn, offering a pleasant space for relaxing or entertaining.

A fantastic opportunity for families seeking a home in a peaceful yet convenient location. Viewing is highly recommended.

FULL DESCRIPTION

GROUND FLOOR

ENTRANCE HALLWAY

LOUNGE

DINING ROOM

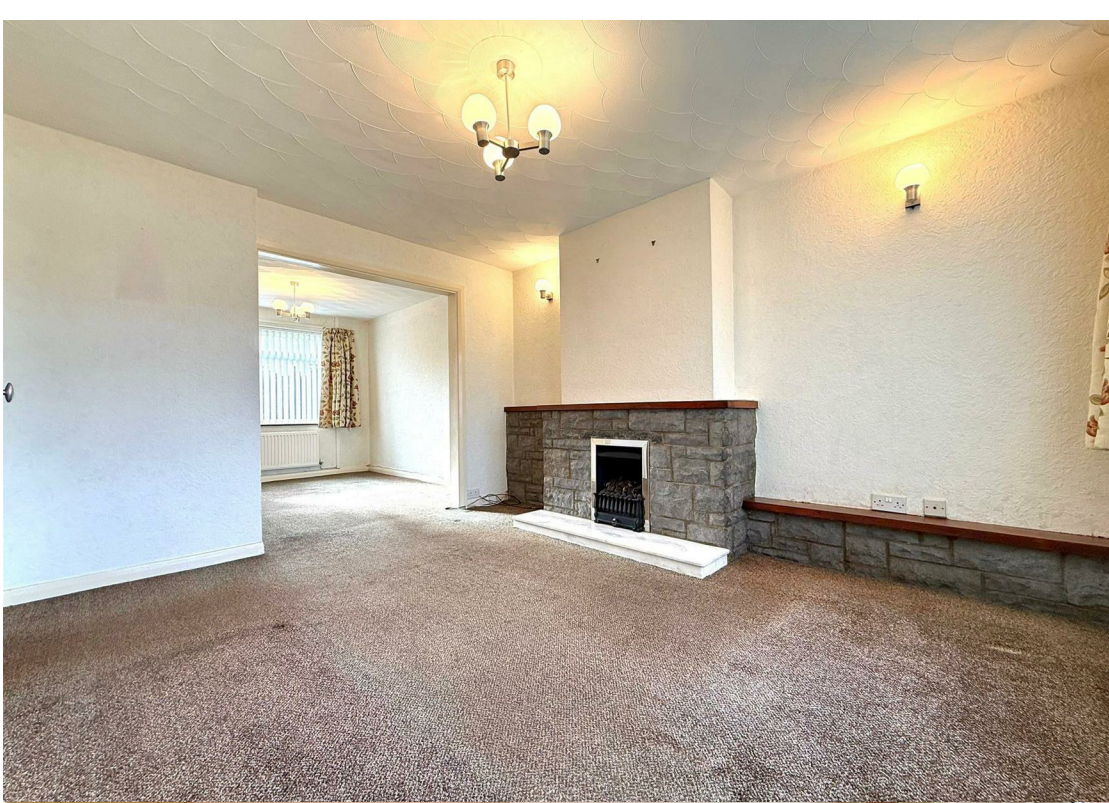
KITCHEN
11'5" x 7'1" (3.49m x 2.18m)

FIRST FLOOR

LANDING

BEDROOM 1
13'1" x 10'3" (4.00m x 3.14m)

BEDROOM 2
9'4" x 9'2" (2.85m x 2.81m)



BEDROOM 3
9'9" x 6'5" (2.98m x 1.96m)

BATHROOM

EXTERNAL
FRONT - Driveway and garden. Laid to lawn garden.

REAR - Patio area and mainly laid to south facing lawn garden.

PARKING
Driveway and garage

TENURE
Freehold

EPC
D

COUNCIL TAX
D

SERVICES
Mains gas, electric, water (metered) & drainage.
You are advised to refer to the Ofcom checker for information regarding mobile signal and broadband coverage

